

# SEA-BASED SOURCES



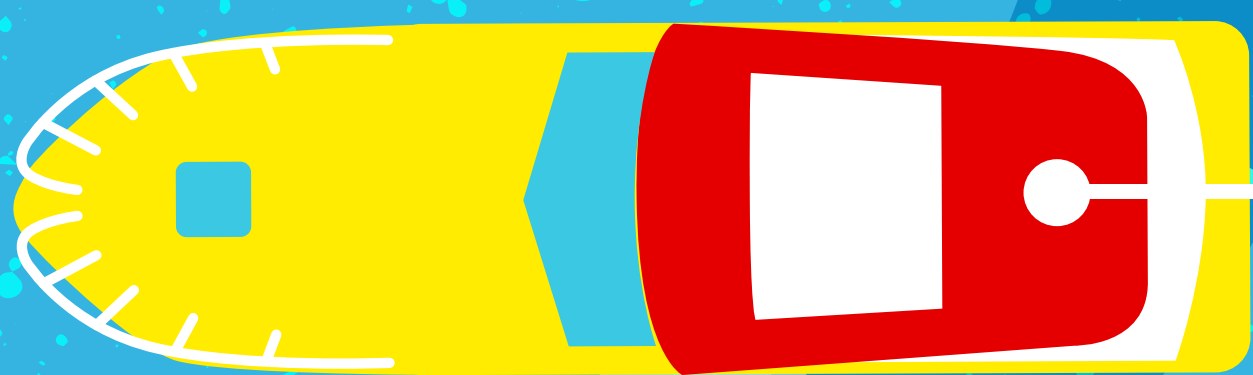
6%

RECREATIONAL BOATING



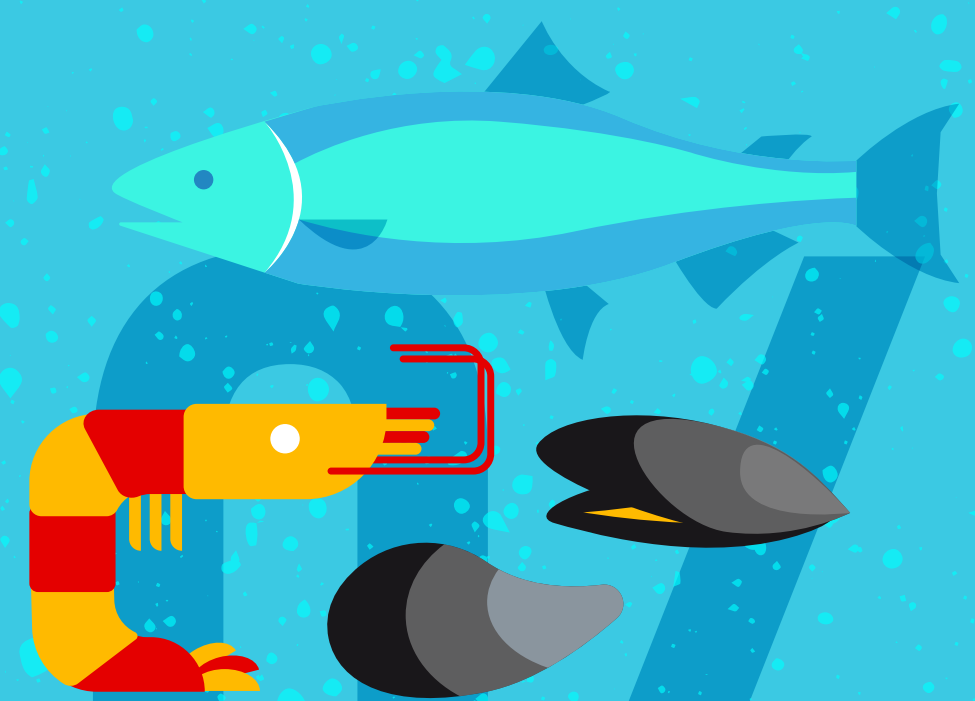
2%

RECREATIONAL FISHING



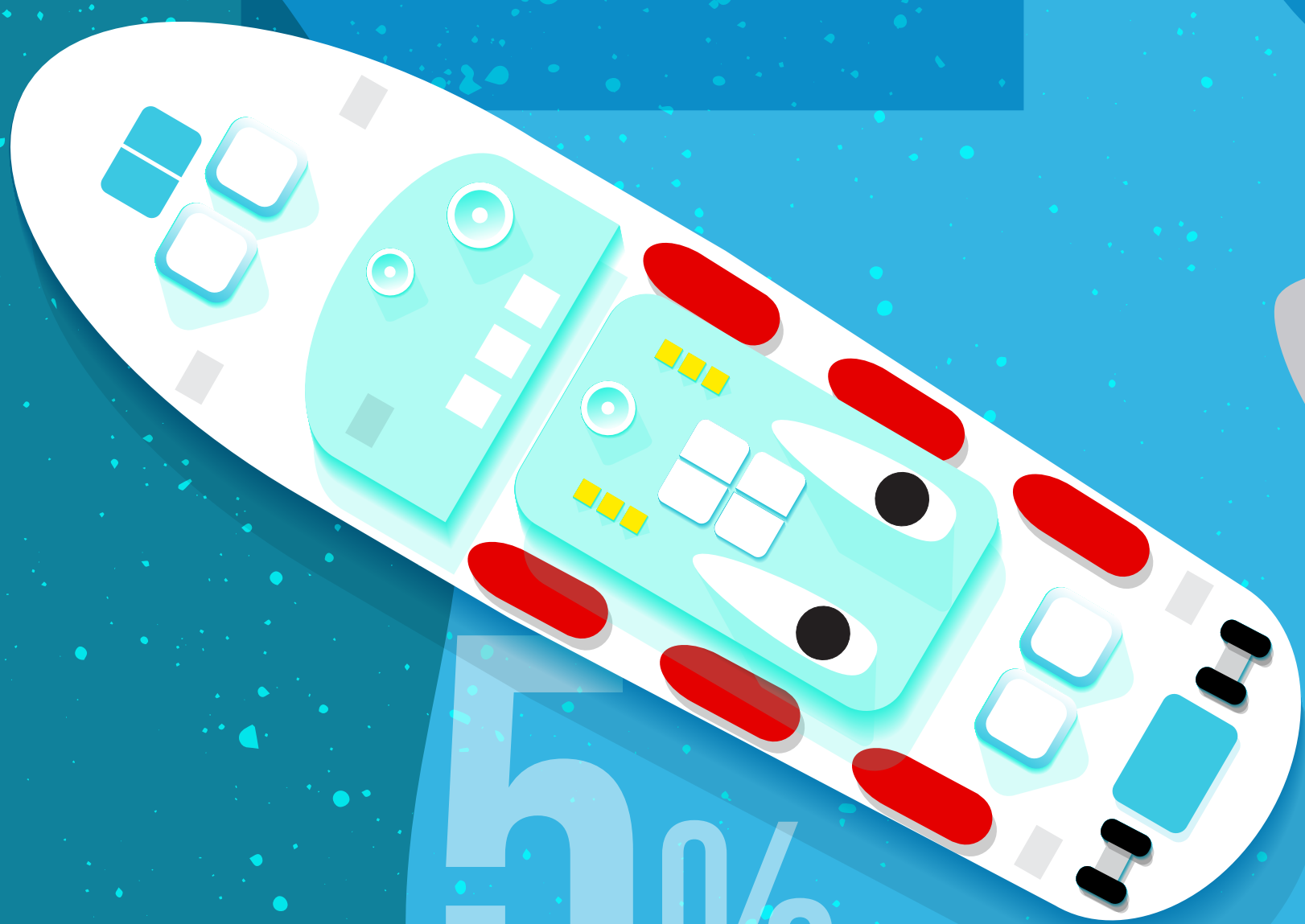
5%

FISHING



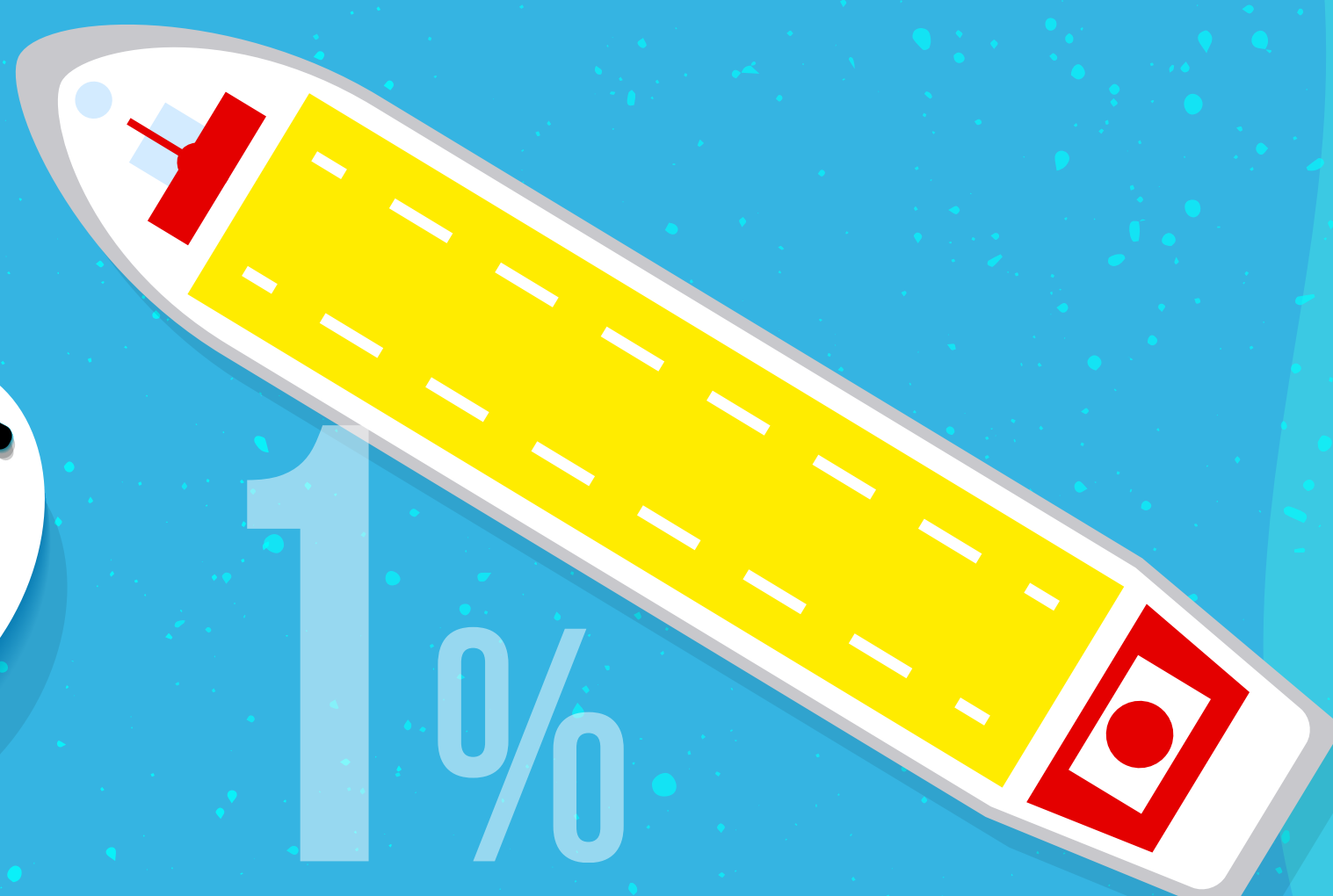
1%

AQUACULTURE



5%

SHIPPING



1%

OTHER MARITIME INDUSTRIES



BLASTIC

PLASTIC WASTE PATHWAYS INTO THE BALTIC SEA

## REFERENCES:

- **ARCADIS (2012).** Case study on the plastic cycle and its loopholes in the four European regional seas areas. European Commission DG Environment Framework contract. ENV.D.2./ETU/2011/0041.
- **BLASTIC project / SEIT, [www.blastic.eu](http://www.blastic.eu)**